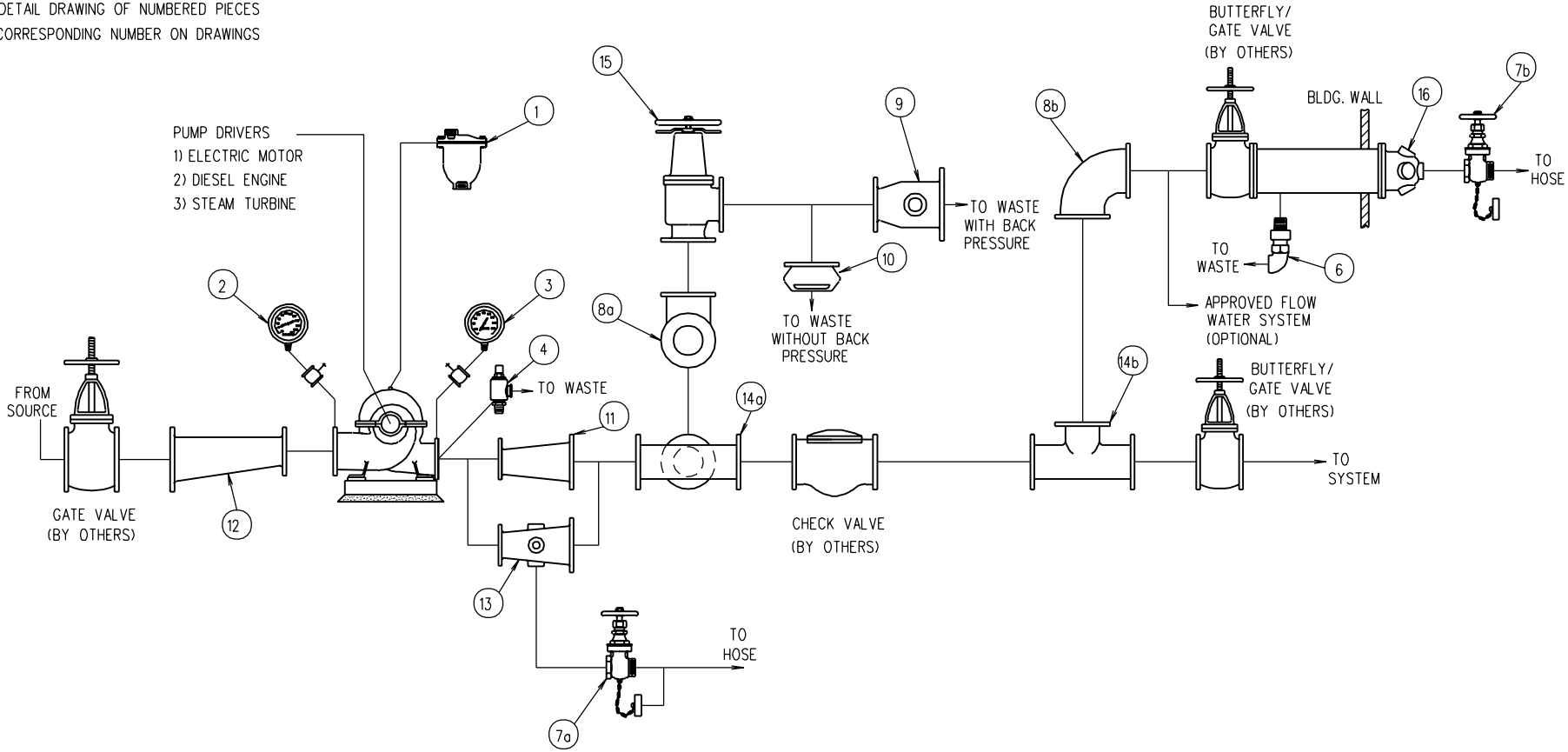


FOR DETAIL DRAWING OF NUMBERED PIECES
SEE CORRESPONDING NUMBER ON DRAWINGS



PUMP DRIVERS
1) ELECTRIC MOTOR
2) DIESEL ENGINE
3) STEAM TURBINE

- NOTE:**
- 1) ITEM 5 REPLACES ITEM 1 FOR MANUAL SYSTEM.
 - 2) ITEMS 8a, 9, 10, 14a, & 15, ARE USED FOR VARIABLE SPEED DRIVES & PUMP PRESSURES ABOVE THE RATED SYSTEM PRESSURE.
 - 3) ITEM 4 IS USED WITH ELECTRIC & STEAM TURBINE DRIVES ONLY.
 - 4) ITEM 7a & 13 ARE USED WITH INSIDE HOSE VALVE HEADER ONLY.

1) AUTOMATIC AIR RELEASE VALVE	10) OPEN WASTE CONE
2) SUCTION GAUGE	11) CONCENTRIC DISCHARGE INCREASER
3) DISCHARGE GAUGE	12) ECCENTRIC SUCTION REDUCER
4) CASING RELIEF VALVE	13) INSIDE HOSE VALVE HEADER
6) BALL DRIP VALVE	14) TEE
7) HOSE VALVE	15) MAIN RELIEF VALVE
8) 90° ELBOW	16) OUTSIDE HOSE VALVE HEADER
9) ENCLOSED WASTE CONE	

-2 REV. ECN*13448, 4/04/02, MC



PATTERSON PUMP COMPANY
A SUBSIDIARY OF THE GORMAN-RUPP COMPANY
TOCCOA, GEORGIA

**GENERAL FIRE PUMP
OPERATING LAYOUT**

DRAWN SAP	DATE 12-21-79	DRAWING NO.
SCALE NONE	APPROV YR	

L1-2